



Dreamweaver Extension

Version 1.2 (03.12.2007)

Requirements


| | |
|-------------------|--|
| PC | <ul style="list-style-type: none">• OS: Windows 95, 98, ME, NT, 2000 or XP• Browsers: Internet Explorer 5.5, Internet Explorer 6, Firefox, Mozilla, Opera, etc.• CPU: 400Mhz or faster• Other: Flash Player 6 or better |
| Macintosh | <ul style="list-style-type: none">• Not Supported |
| Adobe Dreamweaver | <ul style="list-style-type: none">• Adobe Dreamweaver 8 or higher |

Installation

To install the SitePal Extension

1. Extract the files from Dreamweaver_SP_plugin.zip.
2. Double-click SitepalWizard.mxp.
The Dreamweaver Extension manager will load and attempt to install the new plugin.
3. If you are prompted with replacing the older version of the SitePal Wizard, click **YES** to continue with the update.

To remove the SitePal Extension from Dreamweaver:

1. Launch the Dreamweaver Extension manager by clicking “**manage extensions**” from the Help menu within Dreamweaver.
2. Select the “**SitePal Wizard**” extension from the list.
3. Click on the “**trashcan**” icon. 

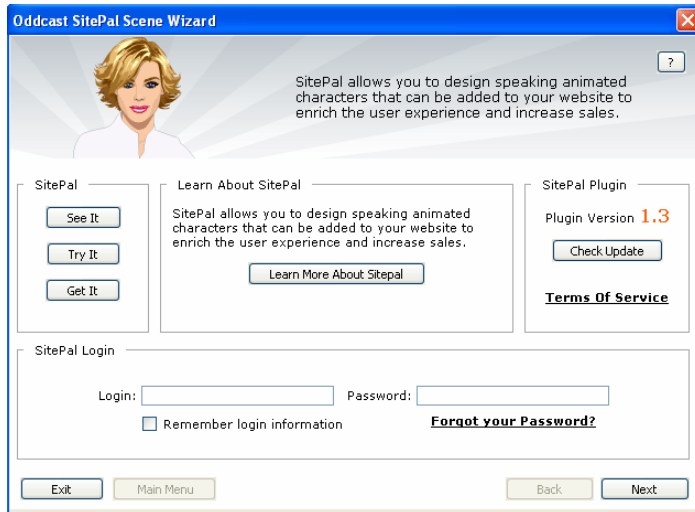
User's Guide

You can use the SitePal Wizard to add SitePal Scenes, remove a Scene, and access your SitePal account at the Oddcast Web site.

Start the SitePal Wizard

- On the Dreamweaver **Commands** menu, click **SitePal Wizard**.

The Oddcast SitePal Scene Wizard appears.



Checking for Updates

You can make sure that you are using the latest version of the SitePal Plug-in:

- Click **Check For Updates**.

If you do not have a SitePal account

- Click **Learn More About SitePal** to see complete product information.
- Click **See It** to watch a movie about SitePal.
- Click **Try It** to try a hands-on demonstration of SitePal.
- Click **Get It** to start a 15-day trial of SitePal with no obligation.

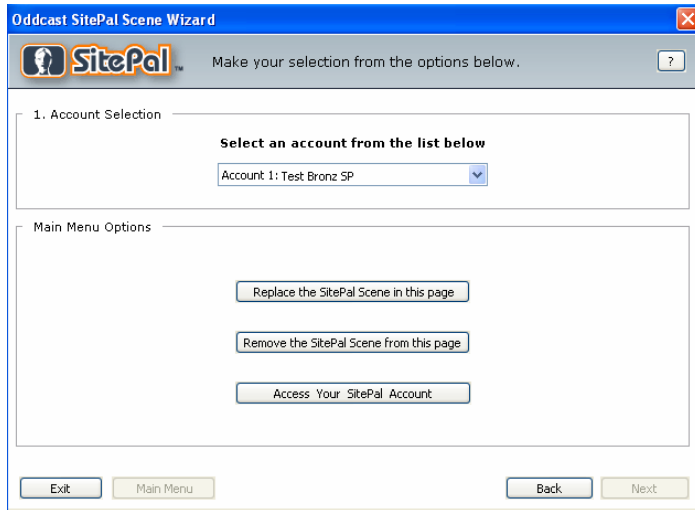
Log in and continue with the Scene Wizard

- Enter your account email address and your password, and then click **Next**. The next page of the **Scene Wizard** appears with the main menu options.

Note:

Check the “Remember Login Information” if you wish to save your username and password.

If you forgot your account password click the “forgot your password” link



Select a different SitePal account:

1. On the Dreamweaver **Commands** menu, click **SitePal Wizard**.
The **Oddcast SitePal Scene Wizard** appears.
 2. Enter your account email address and your password, and then click **Next**.
The next page of the **Scene Wizard** appears.
 3. Under **Account Selection**, from the drop-down menu, select another SitePal account.
- Note:** If you only have one account you will not need to select an account from the list

Go to your SitePal account:

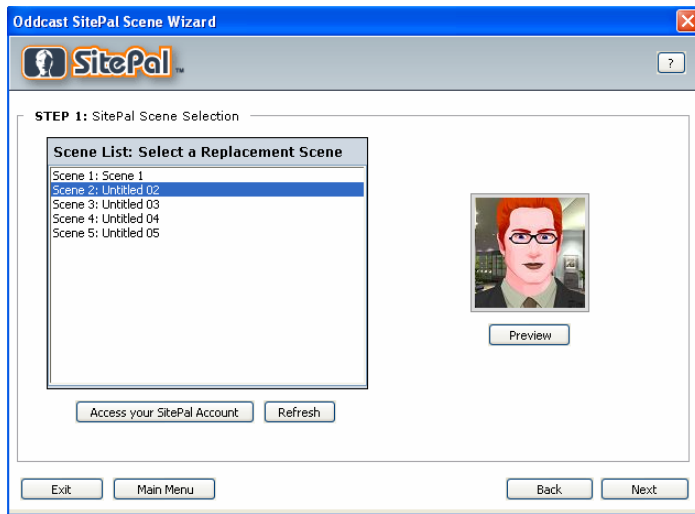
1. Click **Access your SitePal Account**.
The SitePal Login Page loads in a new browser window.
2. Enter the email address and password for your SitePal account, and then click **Enter**.
The home page for your SitePal account loads.
3. Click **Enter**.

Add a SitePal Scene to the current slide

1. On the Dreamweaver **Commands** menu, click **SitePal Wizard**.
The **Oddcast SitePal Scene Wizard** appears.
2. Enter your account email address and your password, and then click **Next**.
The next page of the **Scene Wizard** appears.

3. Click **Add a SitePal Scene to this page**.

The **SitePal Scene Selection** page appears.



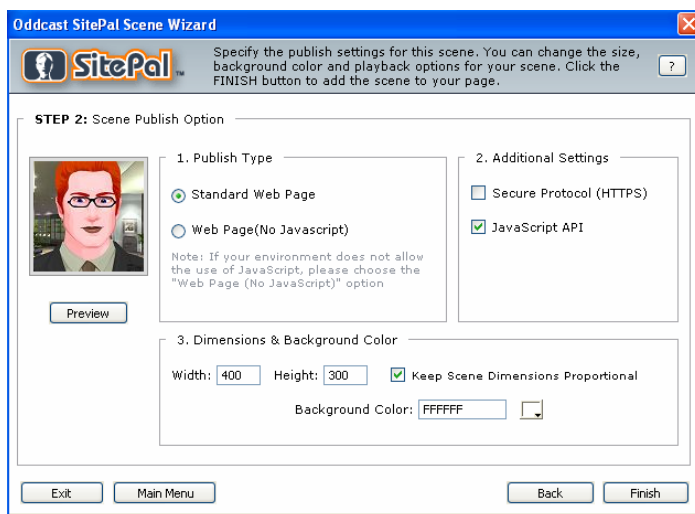
Note: If you access your SitePal account from the SitePal Wizard in Dreamweaver and you add or remove Scenes, click **Refresh** to update the list of Scenes.

4. In the **Scene** List, click a Scene.

If you want to preview your scene before publishing, click on the **“Preview”** button under the thumbnail of your scene.

5. When you selected the Scene you wish to Embed in the slide click the **Next** button.

The **Scene Publish Option** page appears.



6. Under **1. Publish Type**, select your publishing option.

If your Web page hosting environment does not allow the use of JavaScript, select the **Web Page (No JavaScript)** option.

Note: The **Web Page (No JavaScript)** option does not support VHost API calls from the Web page and does not support the **Follow cursor in whole page** option for SitePal Scenes.

- Under **2. Additional Settings**, select the embed properties for your Scene.

| | |
|--------------------------------|--|
| Secure Protocol (HTTPS) | <p>Select this check box if you want the embedded code for your Scene to work with the HTTPS (secure) protocol. This protocol is used by most Web-based e-commerce applications as well as private areas of Web sites.</p> <p>Note: Although this format of HTTPS embed code works for both HTTP and HTTPS, it does not work in an HTML page launched from the desktop. The Web page must reside on a Web server.</p> |
| JavaScript API | <p>Select this check box if you have turned on the Follow cursor in whole page option for your Scene or if you make VHost API calls from the Web page.</p> |

- Under **3. Dimensions & Background Color**, set the embed dimensions and background color.

| | |
|-------------------------|---|
| Scene Dimensions | <p>The suggested dimensions are 400 x 300 pixels. With the Keep Scene Dimensional Proportional check box selected, as you type a width, the height is automatically calculated so that it appears proportionally to the specified width.</p> |
| Background Color | <p>Click the color selector button and select a color or Transparent from the palette. You can also enter the hexadecimal value for a color in the box centered below the palette.</p> <p>Note: The background color that you set is the background color if you selected no background for a Scene on the Background Selection page.</p> |

- Click **Preview** to play your Scene before publishing it.

- Click **Finish**.

The SitePal Wizard closes.

Remove a SitePal Scene from the current slide

- On the Dreamweaver **Commands** menu, click **SitePal Wizard**.

The **Oddcast SitePal Scene Wizard** appears.

- Enter your account email address and your password, and then click **Next**.

The next page of the **Scene Wizard** appears.

- Click **Remove the SitePal Scene from this page**.

- Click **Remove**, and then click Yes to confirm that you want to remove the Scene.

Note: Removing a SitePal Scene from your local webpage within Dreamweaver does not remove the Scene from your SitePal account.